

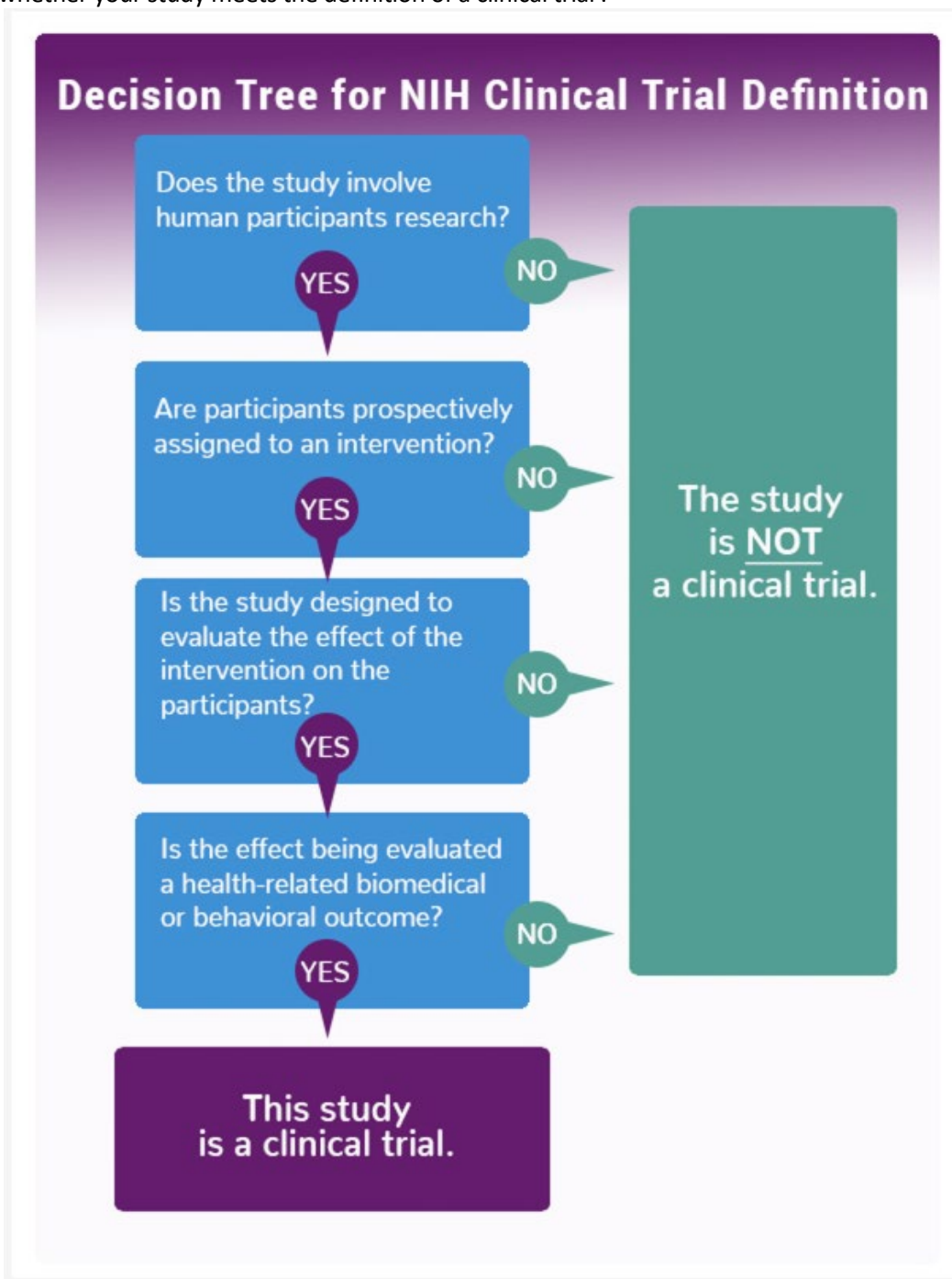
# IS MY RESEARCH PROJECT A CLINICAL TRIAL?

In Australia, the NHMRC accepts the World Health Organisation's definition of a clinical trial as "Any research study that prospectively assigns human participants or groups of humans to one or more health-related interventions to evaluate the effects on health outcomes"<sup>1</sup>

Clinical trials study a range of interventions<sup>2</sup> including (but not limited to):

- pharmaceutical interventions: e.g. experimental drugs, neutraceuticals, biological products, vaccines
- disease detection and treatment methods: new ways to detect and treat disease, diagnostic or screening tests
- therapeutic strategies: psychotherapeutic and behavioural therapies
- medical or surgical procedures and devices
- health related service changes
- preventive care and educational interventions

The NIH have developed a Clinical Trial decision tree<sup>3</sup> (see below) that may assist in determining whether your study meets the definition of a clinical trial .



Sources:

1. World Health Organisation: [who.int/health-topics/clinical-trials/](http://who.int/health-topics/clinical-trials/)
2. Australian Clinical Trials: [australianclinicaltrials.gov.au](http://australianclinicaltrials.gov.au)
3. US National Institute of Health Clinical Trial Decision Tree: [nih.gov](http://nih.gov)